

Gallery TPW



Hold your next event in a contemporary art gallery in Toronto's west end. Perfect for receptions, parties, weddings, workshops, meetings and retreats, product launches, photo shoots, film and commercial locations.

Gallery TPW features a 950-square-foot main gallery space with 18 ft ceilings, an adjacent 300-square-foot gallery, a reception area with a 10 ft counter, a kitchen, and staging area. The public areas of the space are fully accessible. Situated on St Helens Ave between Bloor St W and College St, Gallery TPW's location is adjacent to other cultural amenities, retail, commercial and residential areas, and public transit.

Please contact Kate Wivell, Administration & Development Coordinator, at 416-645-1066 or [kate @gallerytpw](mailto:kate@gallerytpw) to arrange a viewing.

Additional photographs are available upon request.

RATES

Evening rates starting at \$1800

Non-profit rates available please contact for additional information.

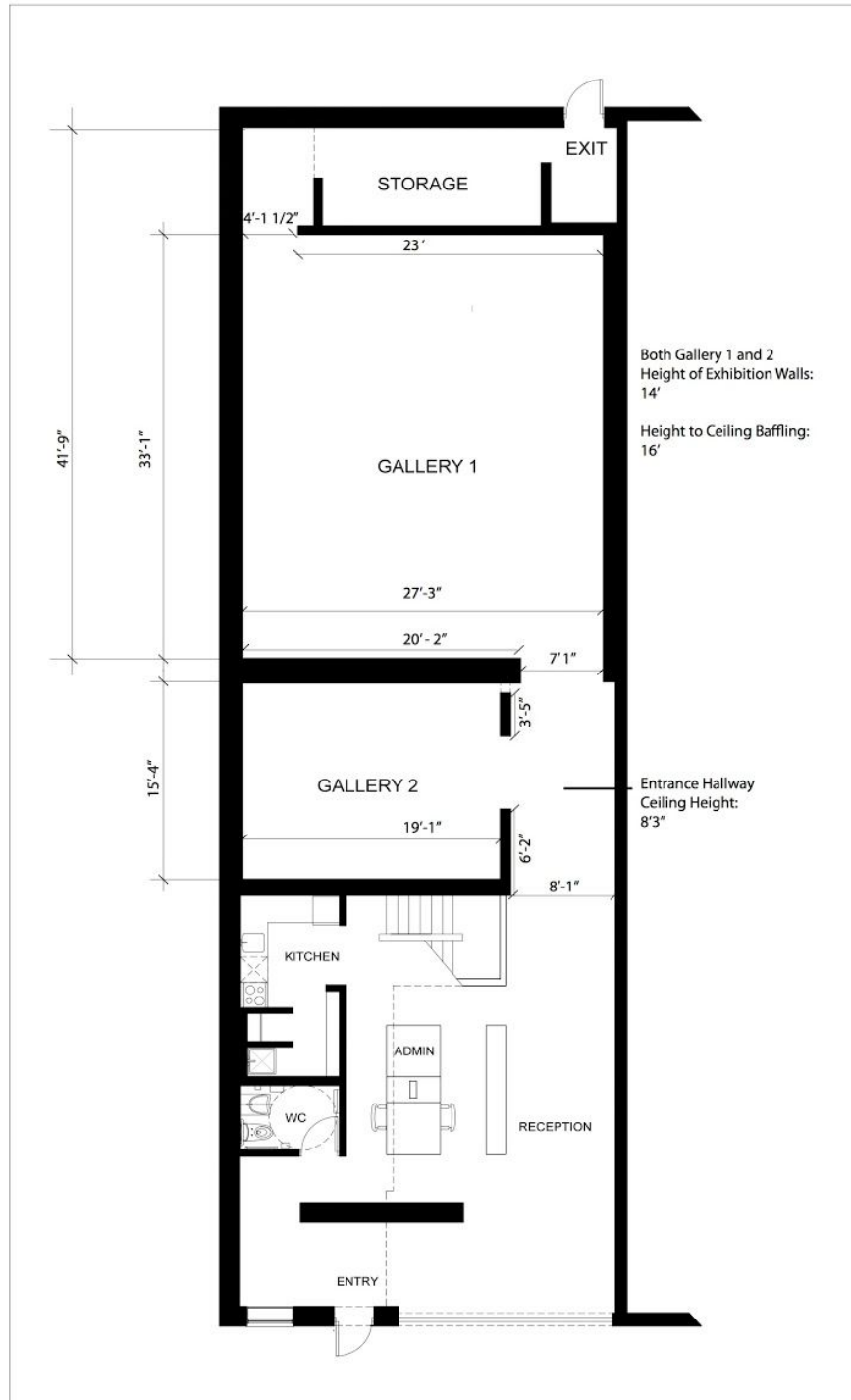
CURRENT AVAILABILITY

August 9th - 19th, 2018 (between exhibitions)

November 26th - December 11th, 2018 (during annual fundraising exhibition and sale, with work by over 80 local and international artists on display and available for purchase)

Please inquire for other available dates

FLOOR PLAN



Gallery TPW

RECEPTION

Ten foot bar and large staging area allows for easy food prep

Kitchen includes access to fridge, domestic oven, and sink

Staircase platform ideal for making speeches

Large garage door with frosted windows provides natural light and outdoor access



GALLERY 1 (MAIN) 950 sq ft with high ceilings, perfect for the main event



GALLERY 1 (MAIN)



GALLERY 2 (SIDE) 300 sq ft perfect for a lounge or media presentation

